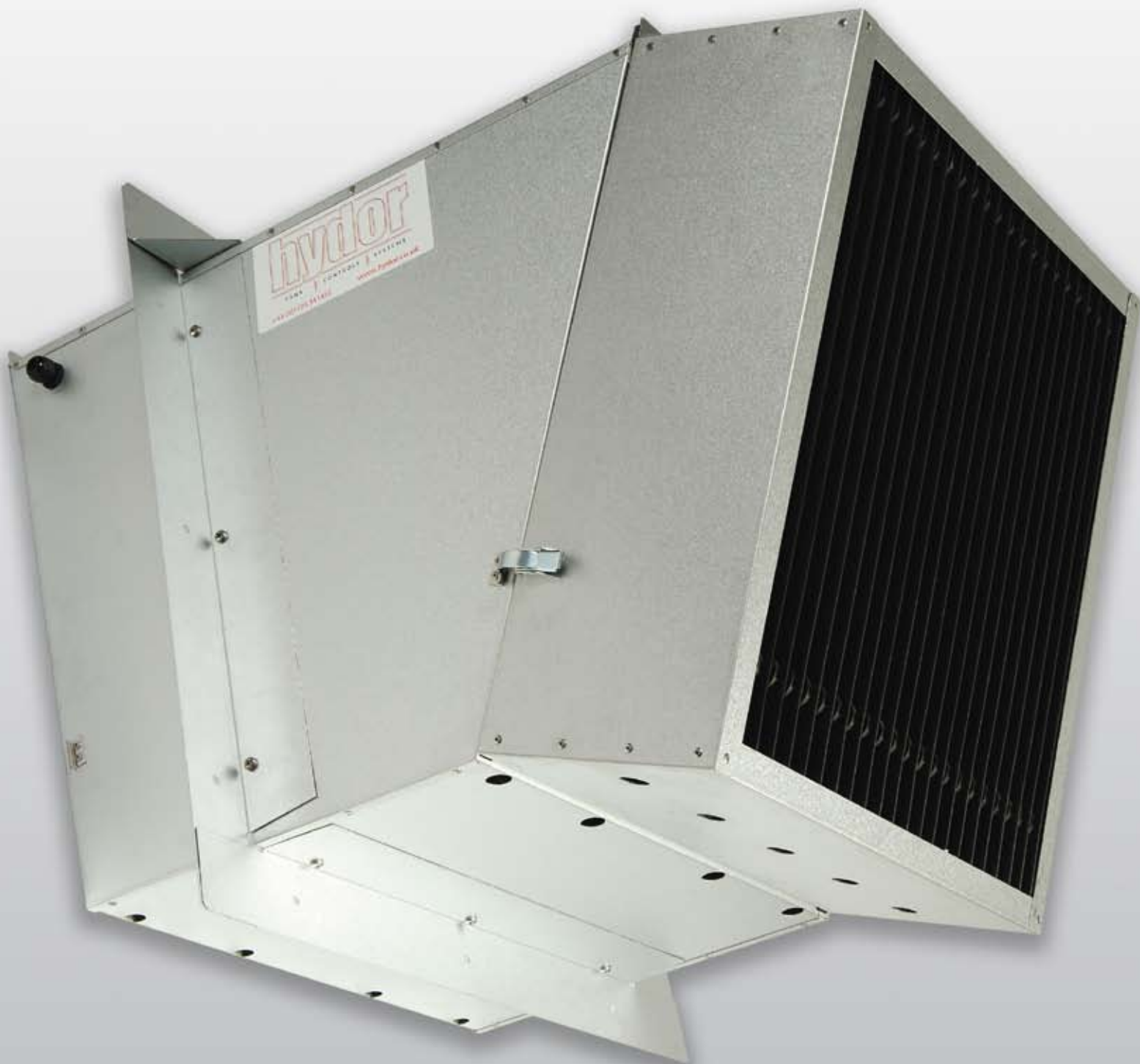


# Side Wall Easi-Fit

## Side Wall Ventilation Units



**hydor**

# Side Wall Easi-Fit

## Side Wall Ventilation Units



Shown with  
Light Baffle fitted

### Features & Benefits

The Side Wall Easy-Fit ventilation unit is a high velocity exhaust fan unit for side wall installation, specifically designed for ease of installation on site, increased service life and outstanding performance for poultry houses.

Each unit extracts air at high velocity, deflecting it outwards and downward to throw unclean air away from the building. This reduces the amount of dust deposit around the fan, and in turn removes problems of smell, unsightliness, pollution and consequent damage to cladding materials.



- Five sizes 450mm, 500mm, 630mm, 710mm, 760mm.
- High efficiency fan with bell mouth ring.
- High velocity of exhausted air angled to 30° disperses dust.
- Low back pressure for maximum efficiency and low noise levels.

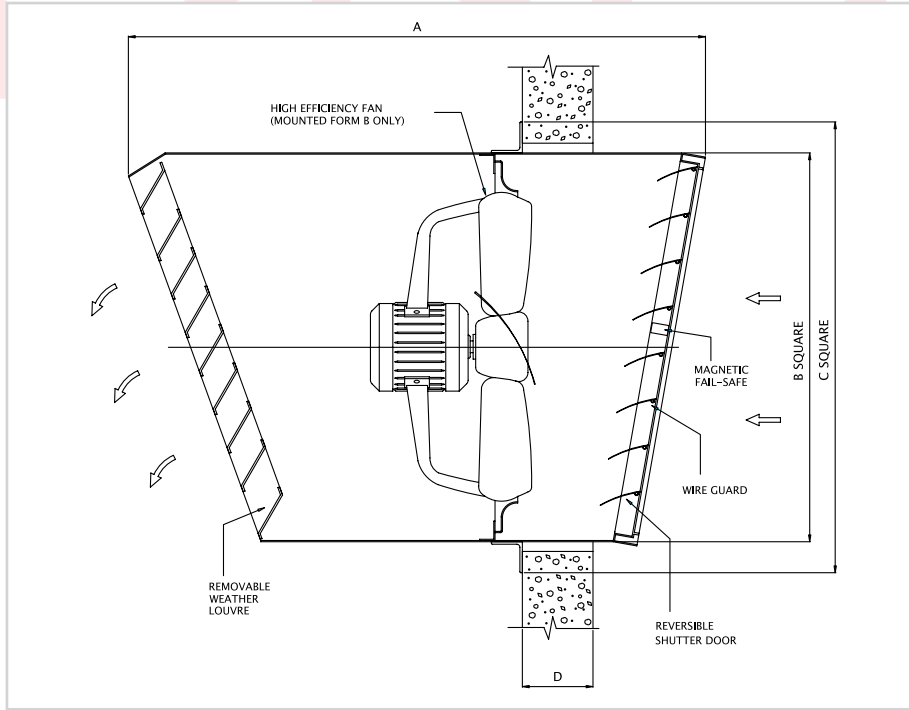


- Easily removable external weather chevron module for ease of cleaning.
- Manually reversible shutter door complete with wire guard (optional).
- Electrically switched fan reversal option.



- Supplied ready-assembled and easily fitted into prepared apertures.
- Slimline profile design for minimum in house projection.

# Dimensional Data



Product Code	A	B	C	D
HSU450	828	576	714	100
HSU500	840	617	755	100
HSU630	900	728	866	100
HSU710	956	817	955	100
HSU760	990	881	1019	100

# Performance & Electrical Data

Product Code	Airflow m <sup>3</sup> /s @ Static Pressure Pa.				Speed (r/min)	Motor Electrical Data 220-240V/1Ph/50Hz			Capacitor	Sound Level dBA @ 3m
	0	25	50	75		Power Watts	FL Amps	Start Amps		
HSU450/4-1	1.572	1.422	1.267	1.024	1350	280	1.9	4	8	60
HSU500/4-1	2.350	2.261	2.131	1.981	1350	500	3	6	10	62
HSU630/6-1	3.110	2.944	2.742	2.181	940	390	2.7	7.6	14	60
HSU710/6-1	4.100	3.944	3.743	3.306	900	550	3.7	7.6	6	61
HSU760/6-1	4.672	4.481	4.261	3.942	900	670	5.3	12	28	63

Product Code	Airflow m <sup>3</sup> /s @ Static Pressure Pa.				Speed (r/min)	Motor Electrical Data 380-420V/3Ph/50Hz			Sound Level dBA @ 3m
	0	25	50	75		Power Watts	FL Amps	Start Amps	
HSU450/4-3	1.572	1.422	1.267	1.024	1350	280	1.0	4.0	60
HSU500/4-3	2.350	2.261	2.131	1.981	1350	500	1.2	4.4	50
HSU630/6-3	3.110	2.944	2.742	2.181	940	390	1.5	3.6	60
HSU710/6-3	4.100	3.944	3.743	3.306	900	550	1.7	4.0	61
HSU760/6-3	4.672	4.481	4.261	3.942	900	670	2.2	5.0	63

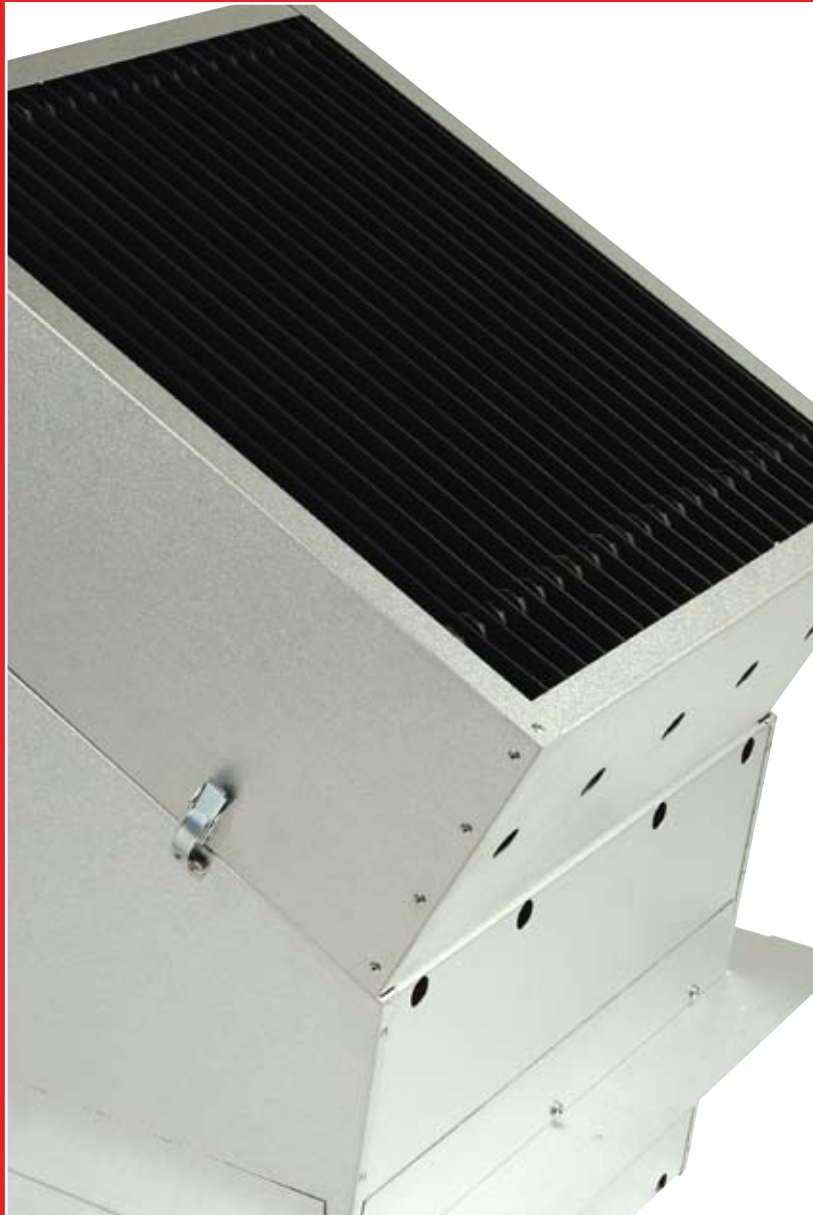
# Accessories

A comprehensive range of control and connection boxes are available to provide individual and group control, incorporating:

- Capacitor
- Thermal Overload Protection
- Reversible Switching
- Variable Speed Switching

Custom built control panels are designed and built to order and conform to IEE regulations (further details are available on request).

Optional Plastic slide-in brooder panels are available on request.



[www.hydor.co.uk](http://www.hydor.co.uk)

Hydor Ltd • Unit 8 • Parkers Close • Downton Business Centre  
Downton • Salisbury • Wiltshire • SP5 3RB  
Tel: +44 (0) 1725 511422 • Fax: +44 (0) 1725 512637  
e-mail: [info@hydor.co.uk](mailto:info@hydor.co.uk) • [www.hydor.co.uk](http://www.hydor.co.uk)

HSU\_EB/20-04-10/01

A member of the



FANS

CONTROLS

SYSTEMS