

# Turbulators

Air Circulation Fans

hydor

# Turbulator Range

## High Quality Recirculation Fans

The standard Turbulator HTS range of fans are specifically designed to have a long throw and move air efficiently to give a measure of control over temperature and humidity within agricultural buildings.

The standard HTS range comprises five model sizes from 355mm to 630mm, producing air volumes of up to 2.86 m<sup>3</sup>/s.



## HTL 20

The HTL 20 has an extended casing length, specifically developed in the Turbulator range to provide an increased throw of circulated air for the applications required. This is achieved with a more settled airflow pattern as the air discharges from the fan outlet.

This Turbulator variant is supplied with an Alu-Zinc casing as standard, but is available in stainless steel for more corrosive environments.



## HTHB 16

The HTHB 16 is a long cased Turbulator complete with an electric heater battery and integrated controls. The HTHB features include;

- Economy in space as it is suspended rather than floor mounted.
- Thermostat with three settings; (Optional extra)
  1. Fan only - Summer Only
  2. Fan heater constant - Severe winter mode
  3. Fan with heater on thermostat - Frost protection

The integrated control panel is attached to the housing of the fan unit.

## HTSS 20

The HTSS 20 is a short cased Turbulator, providing duties of up to 1.37m<sup>3</sup>/s, with a stainless steel casing ensuring a maintenance free, long service life of the product for a variety of applications, where vulnerability to corrosion exists.



The HTS range of Turbulators has been complimented with the addition of three other models, from stainless steel casings for more corrosive environments, to heater versions with integrated controls, to long cased options that meet farmers precise market applications in air circulation.

Each of these Turbulator variants are available with a standard 500mm diameter fan, providing performances of up to 1.37 m<sup>3</sup>/s. Hydor's capabilities in manufacturing and design extend well beyond this, enabling us to provide any additional sizes or bespoke requirements you may have.

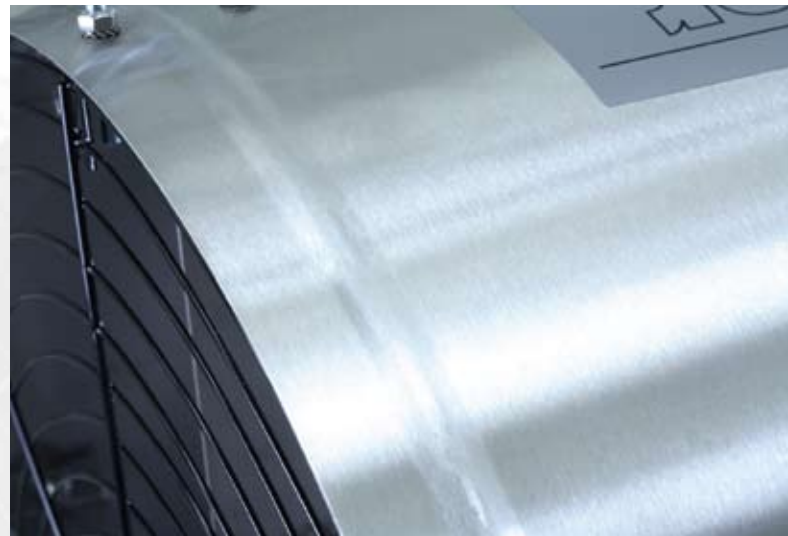
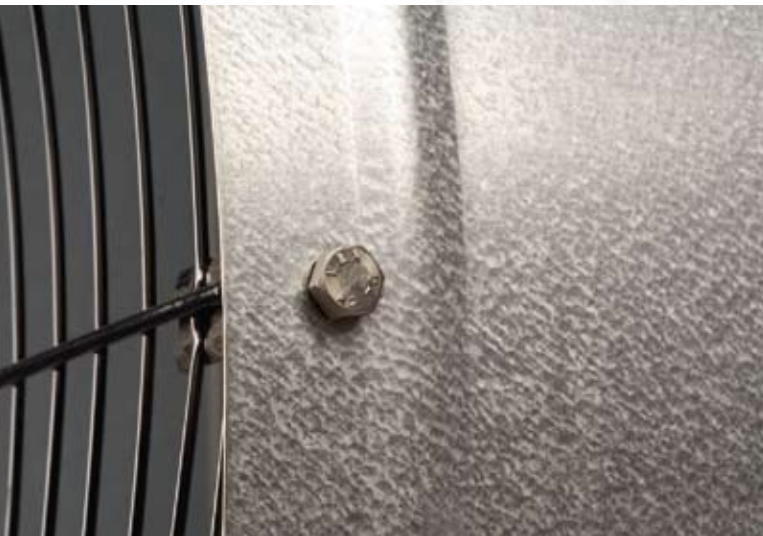
# Turbulators

## Features & Benefits

The Hydor range of Turbulators, are constructed with Alu-Zinc or stainless steel casings, with high efficiency, lightweight motors and non-corrosive plastic impellers, offering various sizes from 355mm to 630mm diameter. The units are suitable for all year round ventilation and movement of air within agricultural buildings, giving evenness of temperature throughout the unit and removing condensation in the building, by circulating the air, thereby improving the environment at low cost and power consumption.

There are a number of distinct benefits for agricultural applications with 'Turbulators', namely –

1. Control of insects in the summer months – many insects and flies are discouraged by a constant airflow which is created by the circulating fans.
2. A reduction in heat stress, whereby heat stress in animals.
3. A constant airflow will ensure the house is kept dry by increasing evaporation of moisture in the air, which means eliminating condensation on walls and ceilings in winter.
4. Turbulators can be mounted at any angle which means optimum coverage.
5. Disperses dust.



Alu-Zinc

Stainless Steel

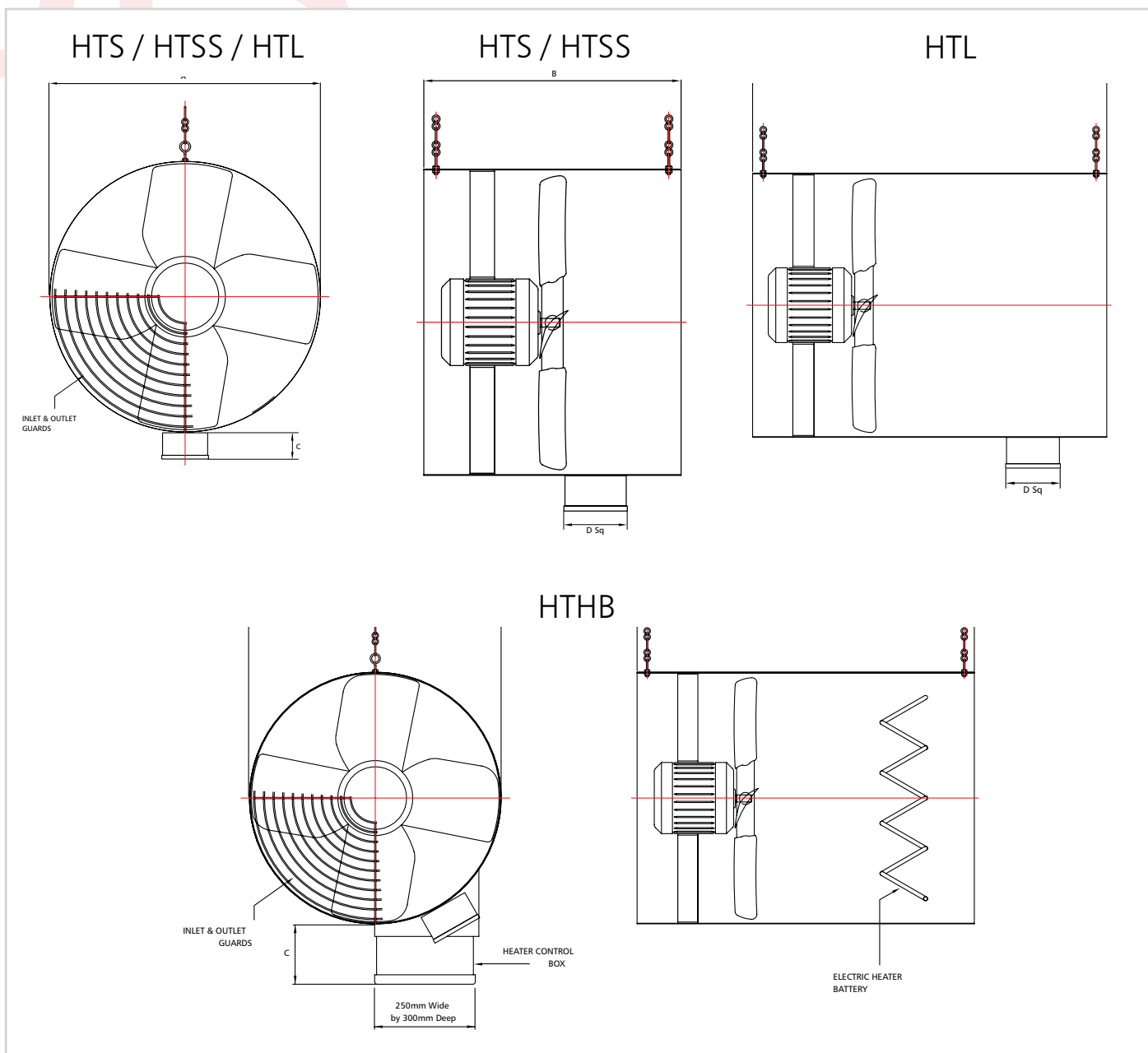


- Rust proof air straightener for long axial air flow.
- Suitable standard 230V single phase supply.
- A full range of both automatic and manual infinitely variable controllers.
- Large range of thermostats and speed controllers available.

- Rust proof wire guards for employee safety.
- Waterproof Junction Box and 3 metre cable.
- Available in stainless steel (non-stocked / made to order). Extra chain / cable available - please notify at time of ordering.

- A full range of electronic / manual thermostats.
- Stainless steel or Alu-Zinc casings supplied with suspension eyes and chain for ease of mounting.
- 12 Months product warranty.

# Dimensional Data



Product Code	A	B	C	D	Weight (kg)
HTS 14	360	420	75	115	10
HTS 16	410	420	75	115	13
HTS 18	460	420	75	115	15
HTS 20	510	420	70	115	16
HTS 24	660	420	70	115	29
HTSS 20	510	420	70	115	16
HTL 20	510	670	70	115	17

Product Code	A	B	C	Weight (kg)
HTHB 16	410	670	140	16

N.B. All Dimensions are expressed in millimeters

# Performance & Electrical Data

Product Code	Fan Dia (mm)	Speed (r/min)	Airflow (m <sup>3</sup> /s)	Throw (metres)	Sound Level dBA @ 3m	Power (Watts)	FLC (Amps)	Supply (V-Ph-Hz)
HTS 14/4	355	1400	0.86	30-35	57	120	1.10	230-1-50
HTS 16/6	400	900	0.89	30-35	52	70	0.80	230-1-50
HTS 16/4	400	1400	1.27	35-40	62	180	1.60	230-1-50
HTS 18/6	450	900	1.12	35-40	54	80	1.00	230-1-50
HTS 18/4	450	1400	1.70	40-45	64	280	1.90	230-1-50
HTS 20/6	500	900	1.37	40-45	56	90	1.40	230-1-50
HTS 24/6	630	900	2.86	45-50	60	280	2.10	230-1-50
HTL 20/6	500	900	1.37	45-50	56	90	1.40	230-1-50
HTSS 20/6	500	900	1.37	40-45	56	90	1.40	230-1-50

Product Code	Fan Dia (mm)	Speed (r/min)	Airflow (m <sup>3</sup> /s)	Throw (metres)	Sound Level dBA @ 3m	Power (Watts)	FLC (Amps)	Heat Output (Watts)	Heater Amps (Max)	Supply (V-Ph-Hz)
HTHB 16/6	400	900	0.89	30-35	52	2590	12.0	2500	10.9	230-1-50

## Accessories



A single fan, manual speed regulator (VMRD1) with overload protection - models available for up to six fans.

Also available is the VARC range of automatic speed controllers with thermistor temperature sensor, for small animal production houses using from one to six fans.

Product Code	Control Method	No. Fans*
VMRD	Manual speed control	1-6
VARC	Temperature, variable speed	1-6
VARC /P	Temp, OFF/variable speed	1-6
VARC /HI	As VARC plus heater interlock	1-6
VARC /HP	As VARC /HI plus fan OFF	1-6

\* Please specify when ordering

## HTH Heater

The HTH Heater fits directly to the Turbulator unit. This highly efficient heater is fitted with a three position switch to allow for the fan to run with or without heater as required, ensuring maximum benefit from the air movement created.

To help reduce energy wastage the unit is fitted with a switch enabling selection between minimum and maximum outputs and a variable thermostat dial to offer precision control of your environment.

Easily mounted from hanging chains and with a stainless steel construction and sealed elements the HTH is built to withstand challenging, humid conditions.

Product Code	Heat Output (kW)		Airflow (m <sup>3</sup> /hr)	Current (Amps)	Supply (V-Ph-Hz)	Length (mm)	Diameter (mm)	Weight (kg)
	Min	Max						
HTH 2.6	1.3	2.6	900	12	220/240-1-50	500	270	6.1





[www.hydor.co.uk](http://www.hydor.co.uk)

Hydor Ltd • Unit 8 • Parkers Close • Downton Business Centre  
Downton • Salisbury • Wiltshire • SP5 3RB  
Tel: +44 (0) 1725 511422 • Fax: +44 (0) 1725 512637  
e-mail: [info@hydor.co.uk](mailto:info@hydor.co.uk) • [www.hydor.co.uk](http://www.hydor.co.uk)

HT\_EB/19-04-10/01

A member of the



FANS

CONTROLS

SYSTEMS