

## Cable Systems

Hydor offer a range of winches, manufactured to a high standard and are well proven within the agricultural industry for reliable operation when opening and closing inlets and popholes.

### features & benefits

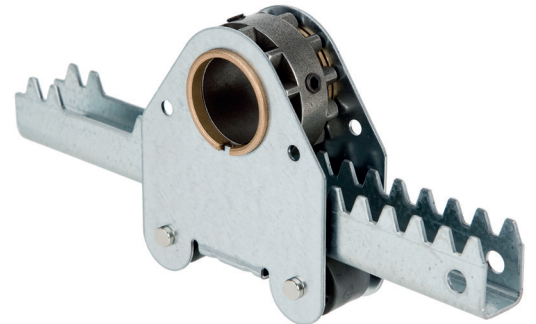
- The stainless steel cable system will come with threaded couplers locating rollers, tensioning weight or spring tailored to suite the type of winch operation.
- The coated steel wire cable system will come with locating rollers, tensioning weight, or spring tailored to suite the type of winch operation.
- Hydor produce and supply bespoke inlet cabling systems to suit all types of operations and sizes of housing.

## THG30 Rack & pinion system for multiple purposes

Our rack and pinion system THG30, used globally for ventilation systems, has undergone a facelift. The application range and working of the system has been improved and optimised along with the overall functionality. By using the optional parts available, it is now also possible to use the THG30 system under several difficult conditions.

### features & benefits

- Optimised functioning and application
- Run-out and Blow-out safeguard
- Adapter bushes for 27mm tube
- Optional clip for stronger unit
- Easy to apply in the replacement market
- Can be used in combination with GW motor gearboxes



## THG25R Truss rail ventilation

The THG25R, mounted on the truss, forms part of the truss-rail ventilation system. The rack box is driven by a GW motor gearbox with the rack driving the pull-push tube. As a standard, the THG25R is supplied with a rack (stroke lengths 750 mm, 900 mm or 1100 mm). The centre of the rack lies 60 mm from the top of the truss (40 mm is optional).

The THG25R is also available with locking plates or rings. The entry shaft of the gearcase can be connected with the 1" or 5/4" drive tubes by means of sleeve joint chain coupling sets, sleeve joint couplings and shaft locking clips. Coupling sets are available for coupling with the pull-push tube (ø27 mm or ø32 mm). Other rack lengths or connections to the pull-push tube are available on request.

