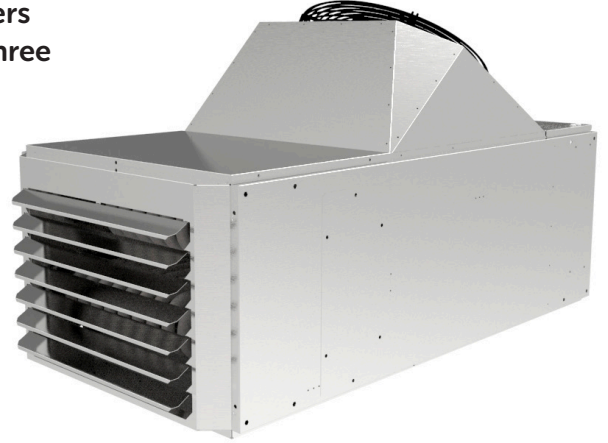


HCBI Indirect Combustion Gas Heater

Introducing the HCBI Range of Indirect Combustion Gas Heaters suitable for both Agricultural and Industrial uses, available in three sizes, to suit the application.

key features

- 92% Heat efficiency
- Low emissions of nitrous oxide
- No CO₂ emissions
- Reduced energy consumption by 25%

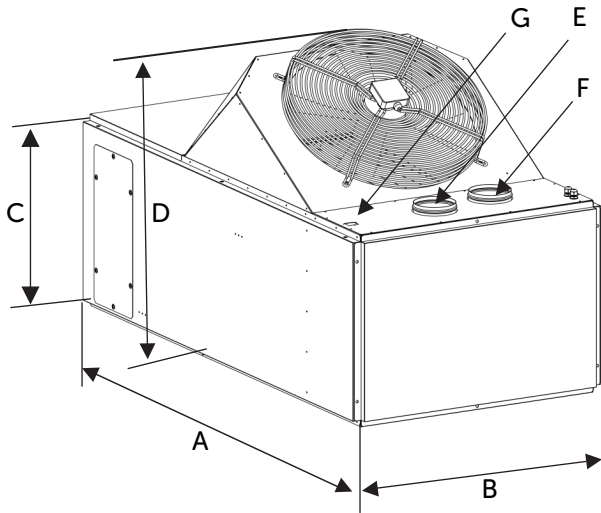


product information	Heater Output (kW)	Fan Diameter (mm)	Fan Speed (rpm)	Air Flow (m ³ /hr)	Air-Jet Through (m)	Gas Consumption at 15°C	
						Propane (kg/h)	Natural Gas (m ³ /hr)
HCBI 50	46	500	1350	4500	30	3.91	5.29
HCBI 76	70	600	1350	6600	35	5.93	8.04
HCBI 100	92	2x500	1380	9000	40	7.81	10.58

product information	Gas Operating Pressure		Electrical Power Supply	Electrical Power		Weight (kg)
	Propane (mbars)	Natural Gas (m ³ /hr)		kW	Amps	
HCBI 50	3.365	3.163	230v/1phase/50Hz	0.47	3.4	3.12
HCBI 76	3.982	3.675		0.76	3.4	3.11
HCBI 100	5.450	4.989		0.89	4	4.22

HCBI Indirect Combustion Gas Heater

dimensional drawing



features and benefits

- Robust stainless steel construction
- Easily adapted to run on propane or natural gas
- Smoke can exhaust through roof or side Wall
- Aluminium tubular heat exchanger
- Suitable for 240V to 50Hz
- Easily cleaned
- Can be suspended or standing
- CE approved
- Single or multiple control

dimensions

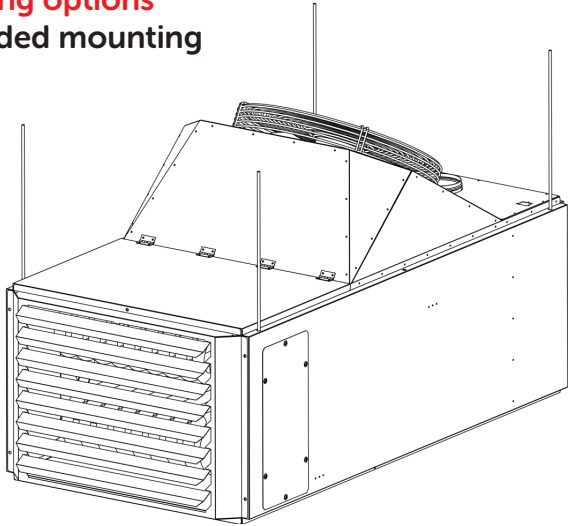
	A	B	C	D	Gas (ins)
HCBI 50	v	638	617	1026	0.75
HCBI 76	1791	892	617	1026	0.75
HCBI 100	1791	1146	617	1026	0.75

Dimensions in mm.

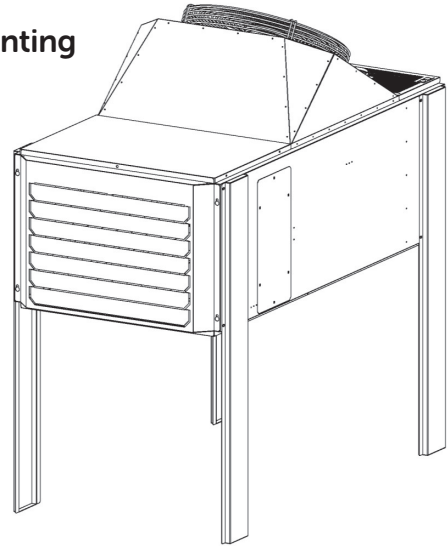
HCBI Indirect Combustion Gas Heater

mounting options

suspended mounting



foot mounting



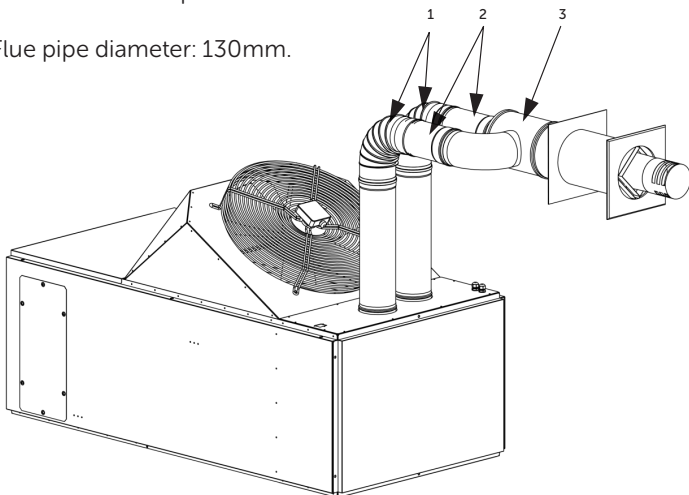
flue kit options

wall mounting

Parts:

1. 2 single elbows at 90°
 2. 2 single extensions
 3. 1 concentric wall terminal
- Condensate trap

Flue pipe diameter: 130mm.

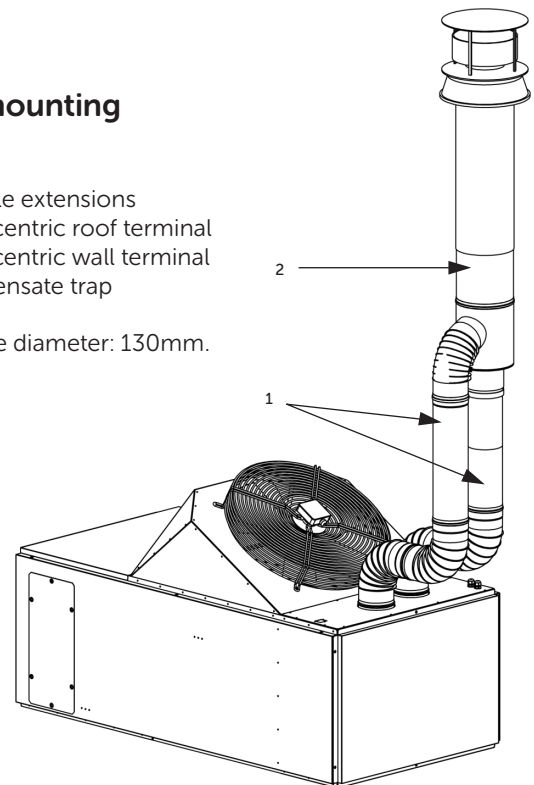


roof mounting

Parts:

1. 2 single extensions
 2. 1 concentric roof terminal
 3. 1 concentric wall terminal
- Condensate trap

Flue pipe diameter: 130mm.



HCBI Indirect Combustion Gas Heater

thermostat with remote probe

Control box with programmable touchscreen and remote probe. This regulation can manage up to 6 heaters. The use of a remote probe allows you to install the control box outside the managed area.

