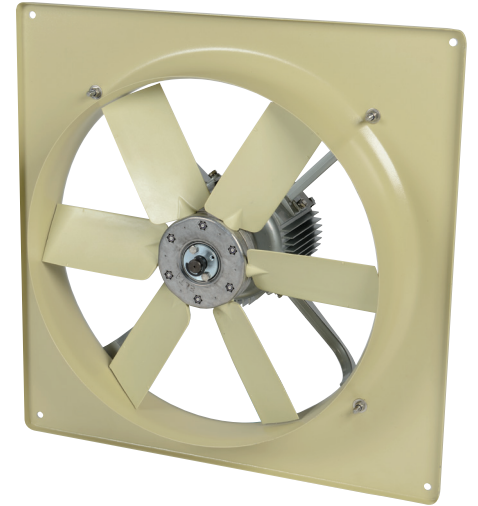


HXP Plate Fan

With a heavy duty construction the HXP range is a modern, high quality, hard working range of propeller fans designed to pass large volumes of air with higher efficiencies to conform to current European ErP legislation.

A common component in both existing and new agricultural and horticultural structures, the standard HXP range is available from stock for swift delivery in both single phase and three phase variants. Hydor HXP Fans boast a highly efficient and robust motor suitable for speed control, with proven reliability for long life and trouble free operation. An excellent all round unit.



SINGLE Phase

220V to 240V / 50Hz

	Speed (r/min)	Airflow m ³ /s @ Static Pressure (Pa)					Overall Eff. %	FMEG	Input (kW)	FLC (Amps)	dBA @ 3m
		0	25	50	75	100					
HXP45041#	1347	1.835	1.725	1.582	1.419	1.256	32.1	N40	0.416	1.91	54
HXP45061#	962	1.329	1.190	0.996			29.3	N40	0.184	0.85	48
HXP50041#	1379	2.204	2.097	1.968	1.813	1.626	32.8	N40	0.543	2.53	57
HXP50061#	954	1.623	1.463	1.257	0.941		35.0	N45	0.206	0.91	45
HXP63061#	924	3.365	3.163	2.934	2.677	2.355	37.0	N44	0.654	3.12	52
HXP71061#	913	3.982	3.675	3.294	2.784		32.6	N40	0.663	3.11	59
HXP80061#	914	5.450	4.989	4.544	4.073	3.477	36.3	N42	0.963	4.22	62

Data in accordance with ErP 327/2011 of the European Parliament. Measurement category used to determine energy efficiency: A. FLC Amps @ 230V / 1Ph / 50Hz. # Add A or B for airflow when ordering.

THREE Phase

380V to 415V / 50Hz

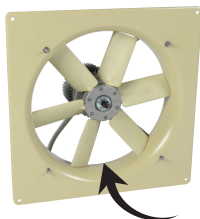
	Speed (r/min)	Airflow m ³ /s @ Static Pressure (Pa)					Overall Eff. %	FMEG	Input (kW)	FLC (Amps)	dBA @ 3m
		0	25	50	75	100					
HXP45043#	1435	1.850	1.754	1.647	1.526	1.387	36.3	N44	0.433	1.08	57
HXP45063#	945	1.276	1.111	0.904			29.5	N40	0.163	0.64	48
HXP50043#	1372	2.701	2.569	2.431	2.281	2.111	34.6	N41	0.712	1.36	57
HXP50063#	926	1.654	1.469	1.246	0.879		33.4	N44	0.211	0.68	44
HXP56043#	1322	3.344	3.175	2.996	2.810	2.614	35.6	N42	0.916	1.60	57
HXP56063#	872	2.254	1.985	1.689			31.5	N41	0.294	0.74	46
HXP63063#	912	3.323	3.010	2.689	2.301		36.6	N44	0.493	1.21	53
HXP63083#	688	2.233	1.826	1.296			29.7	N40	0.222	0.77	46
HXP71063#	862	4.498	4.138	3.678	3.117		35.4	N42	0.689	1.41	58
HXP80063#	896	5.042	4.620	4.177	3.687	3.007	42.0	N49	0.724	1.54	61

Data in accordance with ErP 327/2011 of the European Parliament. Measurement category used to determine energy efficiency: A. FLC Amps @ 400V / 3Ph / 50Hz. # Add A or B for airflow when ordering.

A airflow



B airflow

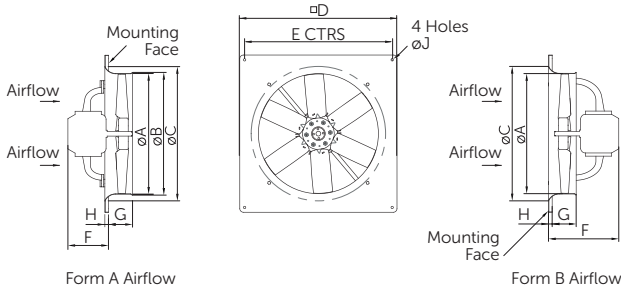


HXP Plate Fan

IP55
protection

70°C
temperature

dimensional drawing



features and benefits

- 6 sizes from 450mm to 800mm diameter
- Robust construction incorporating GRP aerofoil impeller
- High volume air movement
- Optional motor / propeller side guards
- ErP compliant
- Quick and easy installation
- Two year extended warranty available on motors
- Cool-running motors constructed with a finned aluminium casing to give excellent heat dissipation and increased lifecycle

dimensions

	A	B	C	D	E	F(A)	F(B)	G	H	J	Weight (kg)
HXP45041	450	462	500	575	535	157	269	95	15	10	15
HXP45043	450	462	500	575	535	186	199	95	15	10	15
HXP45061	450	462	500	575	535	173	186	95	15	10	15
HXP50041	500	512	560	655	615	182	305	100	15	10	19
HXP50043	500	512	560	655	615	182	305	100	15	10	19
HXP50061	500	512	560	655	615	169	293	100	15	10	20
HXP50063	500	512	560	655	615	169	293	100	15	10	20
HXP56043	560	577	620	725	670	182	321	100	15	10	22
HXP63061	630	647	700	805	750	189	328	105	20	10	30
HXP63063	630	647	700	805	750	189	328	105	20	10	30
HXP63083	630	647	700	805	750	187	326	105	20	10	30
HXP71061	710	725	765	850	810	204	341	103	27	10	30
HXP71063	710	725	765	850	810	191	328	103	27	10	30
HXP80061	800	817	880	973	910	202	353	105	30	10	35
HXP80063	800	817	880	973	910	202	354	105	30	10	35

Dimensions in mm.

accessories

	Plastic Louvre Shutters	Single Phase Electronic Controller	Single Phase Transformer Voltage Controller	Three Phase Transformer Voltage Controller (5 Step)
HXP4504#	HLVS450	HFC3.0	TC014	TC033
HXP4506#	HLVS450	HFC1.7	TC012	TC033
HXP5004#	HLVS500	HFC3.0	TC014	TC035
HXP5006#	HLVS500	HFC1.7	TC012	TC033
HXP5604#	HLVS560	-	-	TC033
HXP5606#	HLVS560	HFC1.7	TC012	TC033
HXP6306#	HLVS630	HFC6.0	TC014	TC033
HXP6308#	HLVS630	-	-	TC033
HXP7106#	-	HFC6.0	TC014	TC033
HXP8006#	-	HFC6.0	TC018	TC033