

THERM SOL'AIR Livestock Brooder

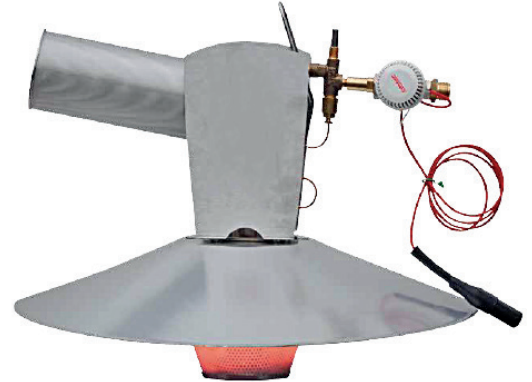
operation

In order to control the temperature, you must select a number on the thermostat.

This sets the temperature required at the probe location.

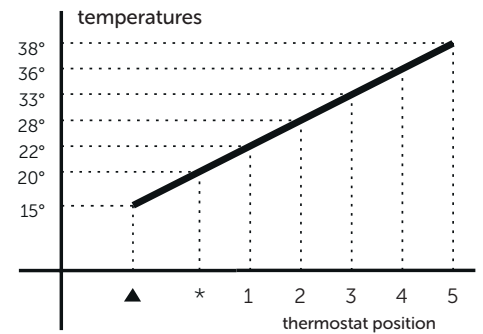
features & benefits

- Refractory stainless steel burner
- Anodised and polished aluminium parabol reflector
- Security plate (to prevent incandescent material dropping onto the litter)
- Thermocouple with overtemperature cut-outs
- When positioning the THERM SOL'AIR horizontally and combining it with a +3°C on the floor and -9°C on the roof you can save up to 25% fuel



6.6
kW

11.6
kW

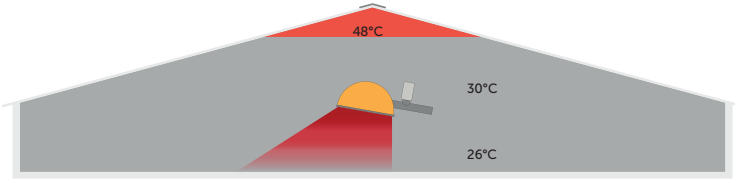


product information

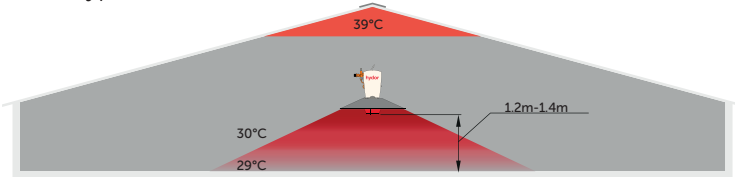
HP / 1400 mbar

			6.6 kW	11.6 kW
maxi	Power max	Watt	6500	11600
		Kcal/h	5655	9918
		BTU/h	22165	40000
	Pressure	mbar	1400	1400
		psi	20.3	20.3
	Flow	g/h	464	828
mini	Power max	Watt	1155	1600
		Kcal/h	1004	1392
		BTU/h	3938	5516
	Pressure	mbar	500	1400
		psi	7.25	20.3
	Flow	g/h	82.5	114
	Recommended mounting height	m	1.4	1.8
	Floor coverage	diameter (m)	7.5	10
	Number of birds		3500	5500

example of heat distribution

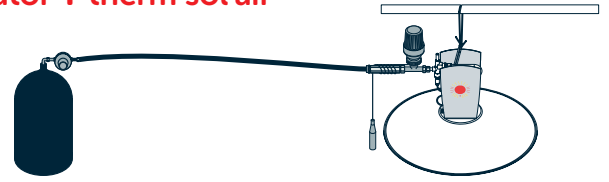


other types of brooder

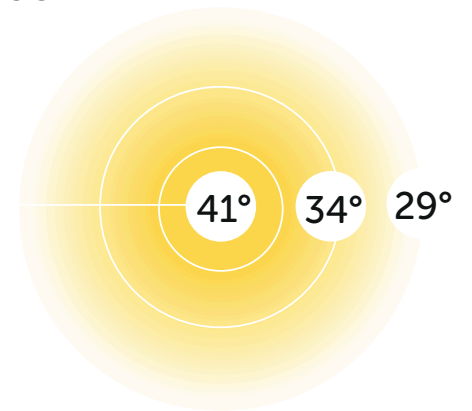
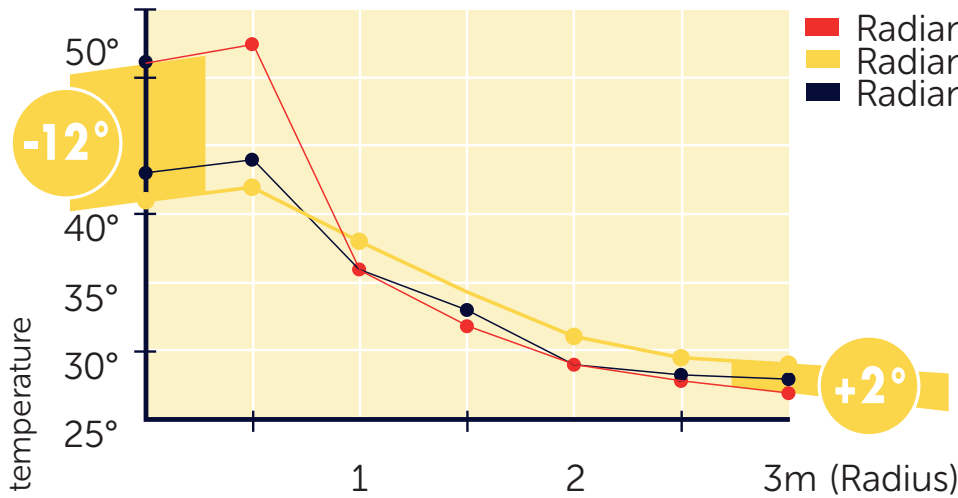


Therm Sol'Air brooder

regulator + therm sol'air



test data



Test Conditions:

Concrete floor without insulation and without litter. 3x 6.5kW heaters are mounted horizontally at 1.2m height.

The temperature is measured at 0.5m intervals up to 3m every 30 minutes over a 24 hour period.