

HIMF In-Line Mixed Flow Fan

Installation and Maintenance Instructions.

THESE INSTRUCTIONS MUST BE READ FULLY BEFORE COMMENCING INSTALLATION.

Owner / installer: The life of this apparatus and its efficiency will be increased if its use and maintenance is carried out in accordance with these instructions and current statutory requirements. The installation and initial adjustments should be carried out by a qualified and competent technician. Hydor Limited should be consulted before substituting or fitting parts from another manufacturer. It is the responsibility of the installer to verify that the installation is in accordance with the following standards and the owner is given the current User's Manual.

Any modifications to the fan or its installation, even the smallest modification, change or elimination of security components or pieces that influence the efficiency or loss of ventilation, will result in the CE Certification and Hydor's warranty being cancelled.

Model	Speed r/min	Electrical Data		
		FLC Amps	Input W	
HIMF100	High	2300	0.117	27
	Low	2000	0.116	27
HIMF125	High	2300	0.148	34
	Low	2000	0.143	33
HIMF150	High	2400	0.291	67
	Low	1900	0.252	58
HIMF200	High	2480	0.56	120
	Low	2266	0.53	113

1. General

- 1.1 It is important that these Installation and Maintenance Instructions are fully adhered to.
- 1.2 Full details of the unit supplied are shown on the product nameplate. If in doubt about any detail contact Hydor Ltd or its agents for clarification.
- 1.3 All electrical Installations must be carried out by suitably qualified and competent personnel in accordance with all statutory requirements.
- 1.4 These instructions cover only the Hydor Ltd product and do not include the supply or installation of any safety equipment that may be required e.g. adequate guarding or protection from rotating parts and proper electrical isolation.
- 1.5 Any declarations made by Hydor Ltd about product installation and safety, are dependent on the fan being used within installations which themselves meet the requirements of the relevant Standards and Directives of your region.
- 1.6 The fan is designed for use in an ambient temperature from -20°C up to a maximum of +50°C and up to 95% relative humidity. The fan is not suitable for corrosive or explosive atmospheres.
- 1.7 The installer should provide easy access to the fan to facilitate future maintenance.
- 1.8 The installer should ensure the fan is adequately supported.
- 1.9 This appliance can be used by Children aged from 8 years and above and persons with reduced physical, sensory or mental capabilities or lack of experience and knowledge if they have been given supervision or instruction concerning use of the appliance in a safe way and understand the hazards involved. Cleaning and user maintenance shall not be made by children without supervision.
- 1.10 This product is not intended for use by persons (including children) with reduced physical sensory or mental capabilities, or lack of experience and knowledge, unless they have been given supervision or instruction concerning use of the product by a person responsible for their safety.
- 1.11 Children should be supervised to ensure that they do not play with the appliance.
- 1.12 At end-of-life, the unit must be disposed of in an environmentally friendly manner by suitably qualified and competent personnel in accordance with the requirements of applicable Standards and Directives.

WARNING The fan must be isolated from the power supply during installation and maintenance.

2. Installation

- 2.1 Upon receipt, the fan should be visually inspected to check for any damage. Ensure that the impeller is free to rotate.

- 2.2 If the supply cord is damaged, it must be replaced by the manufacturer, its service agent or similarly qualified persons in order to avoid a hazard.
- 2.3 If there are any queries concerning the fan equipment, Hydor Ltd should be contacted prior to the installation.
- 2.4 The fan must be securely mounted in the desired position to suit the application. A minimum of 1 meter of duct at least the same diameter as the fan spigots diameter is to be fitted to the fan inlet and discharge spigots.
- 2.5 Minimum 150mm clearance between the fan and the surrounding structure should be reserved.
- 2.6 To install the fan: -
Remove the fan body from the spigots that are attached to the base by releasing the four screws.
Mount the base in the desired position using the fasteners supplied.
Replace the fan body in-between the spigots and tighten the four screws.
- 2.7 Check the details on the rating plate to ensure that the correct power supply (voltage, frequency and phase) is available. An incorrect power supply will lead to permanent damage of the fan.
- 2.8 Refer to the appropriate wiring diagram.
- 2.9 Means for electrical disconnection must be incorporated in the wiring installation in accordance with the relevant wiring and electrical regulations. The disconnection may be achieved by having the plug accessible or by incorporating a switch in the fixed wiring in accordance with the wiring regulations.
- 2.10 Precaution must be taken to locate the exhaust discharge terminal so as to avoid the backflow of gases into the room from the open flue of gas or other fuel burning appliances.
- 2.11 Fans fitted with run-on timers have settings adjustable between 2 to 30 minutes.

3. Start-up

- 3.1 Before power is supplied to the unit, check that the wiring is correct as per the fan connection diagram.
- 3.2 At initial start-up, check that impeller rotation and airflow direction is correct.
- 3.3 Check that the motor amperage drawn does not exceed the nameplate rating.

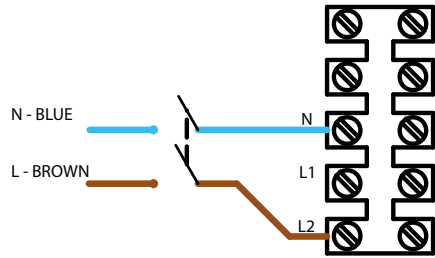
4. Fan Maintenance

- 4.1 Inspection of the fan at least once every 12 months is recommended to ensure that the motor, fan blades, and supporting guards, are clean. Any build-up of dust and deposit on the blades or guards should be removed using a non-abrasive cleaner.

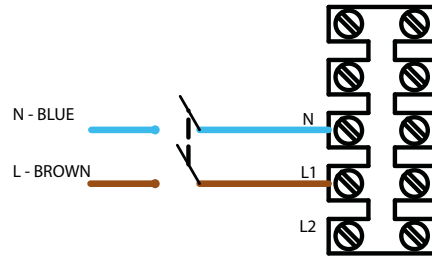
- 4.2 All fastenings should be checked for tightness. In addition, all rotating items should be checked.
- 4.3 Bearings are of the "sealed for life" type and will not need a detailed inspection.

WARNING This fan is fitted with a one shot thermal fuse which switches the fan off in the event of a fault condition. Do not cover the air inlet and outlet. Only a suitably qualified and competent person may carry out maintenance after the electrical supply has been isolated.

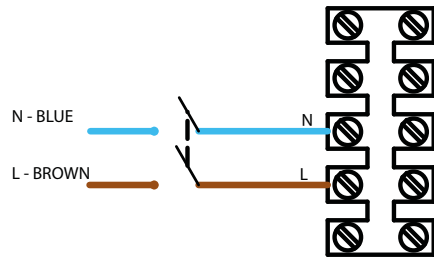
5. Wiring Diagrams



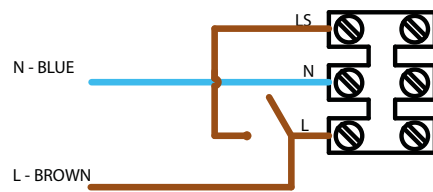
Standard Version (Low Speed)



Standard Version (High Speed)



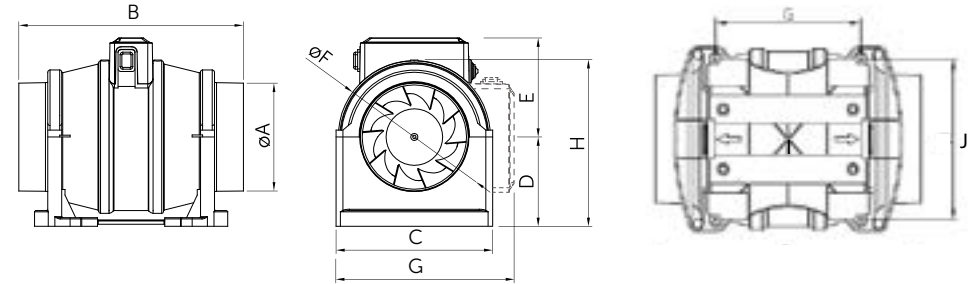
Standard Version With Speed Selection Switch



Timer Version With or Without Speed Selection Switch

6. Product Information

Single phase 220V to 240V 50Hz or 220V 60Hz



Model	Dimensions (mm)										Weight kg
	ØA	B	C	D	E	ØF	G	H	I	J	
HIMF100	97	296	179	104	113	174	202	190	140	154	2.4
HIMF125	124	256	179	102	113	174	202	190	140	154	2.4
HIMF150	147	298	194	109	127	195	223	211	182	170	3
HIMF200	198	310	254	129	146	228	272	243	120	236	4

Guarantee

Hydor or its agents will, within a period of one year from the date of dispatch from their works, at its option, replace any goods, which are proven to have defects as a result of defective materials or workmanship. The goods must be inspected by a Hydor official and if necessary returned, with a Returns Note Number, carriage paid, for further examination.

Hydor Ltd

Hydor

Unit 8, Parkers Close, Downton Business Centre,
Downton, Salisbury, Wiltshire, SP5 3RB, UK

Tel: +44 (0) 1725 511422

Fax: +44 (0) 1725 512637

Email: info@hydor.co.uk

Web: www.hydor.co.uk

idealair group

Unit 1, Building 1, Sydney Corporate Park,
85 O'Riordan Street, Alexandria NSW 2015

Tel: +61 (02) 8073 3310

Fax: +61 (02) 8073 3320

Email: info@idealairgroup.com.au

AMS

11 Ingrid Road, Montague Gardens,
7442 Cape Town, Western Cape

Tel: +27 (0) 21 552 1077

Fax: +27 (0) 21 552 2797

HIMF Inst Issue 5: 18.06.15